

ANNEALING - BRAZING - HARDENING
SOLUTION ANNEALING - SINTERING - OXYDATION

TECHNICAL SPECIFICATIONS - STANDARD EXECUTION

SYSTEM 345		20/10/100	20/10/200	30/20/200	30/20/300	30/20/400	40/20/300	40/20/400	50/35/400
Max. Temperature	°C	1150	1150	1150	1150	1150	1150	1150	1150
Output capacity	Kg	40	80	150	170	240	240	320	400
Basket width	mm	200	200	300	300	300	400	400	500
Basket length	mm	1000	2000	2000	3000	4000	3000	4000	4000
Load height	mm	100	100	200	200	200	200	200	350
Electric heating	kW	24	40	75	85	120	120	160	160
Gas consumption	m³/h	3 - 4	4 - 5	5 - 6	6 - 7	6 - 7	7 - 8	7 - 8	8 - 10



200 kg



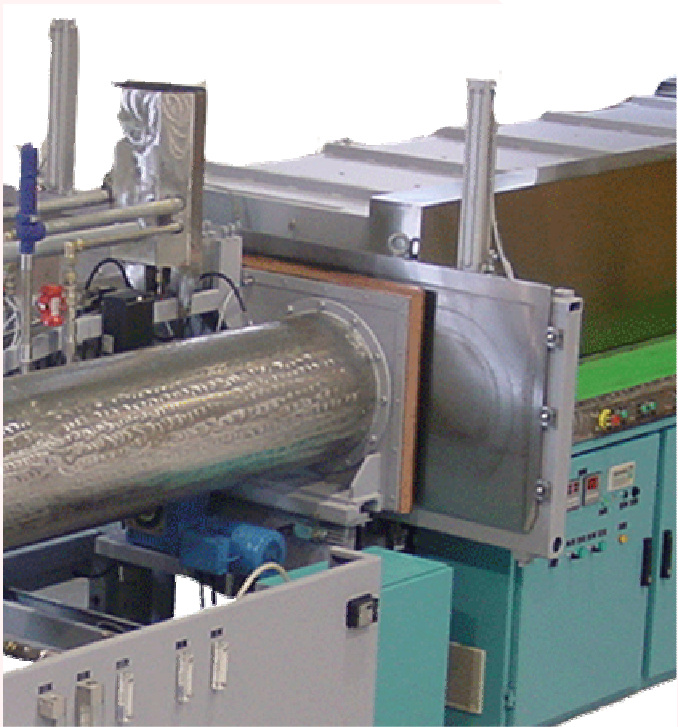
100 kg



50 kg

A new type of installation

EXCELLENT RESULTS
UP TO 1150°C



A CONCEPT TO TALK ABOUT
FOR A LONG TIME!

Annealing
Brazing
Hardening
Solution annealing
Sintering
Oxydation

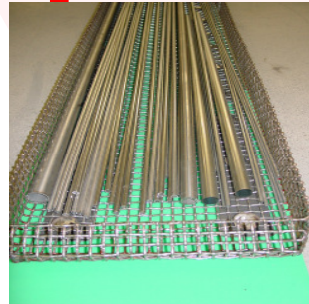


SYSTEM 345

PATENTED



Watch industry



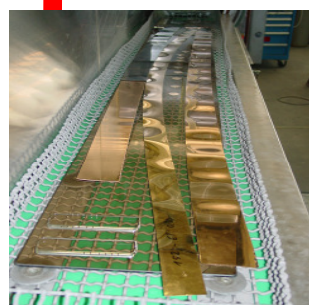
Tubes and profiles



Cutlery



Stampings



Precious metals

Other fields of application:

- Medical and dental instruments
- Electrical and electronic industry
- Optical industry
- etc.

QUALITY OF THE PRODUCTION

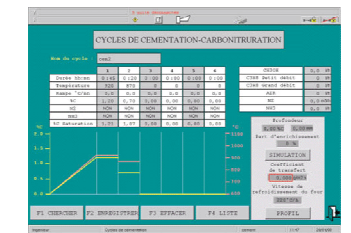
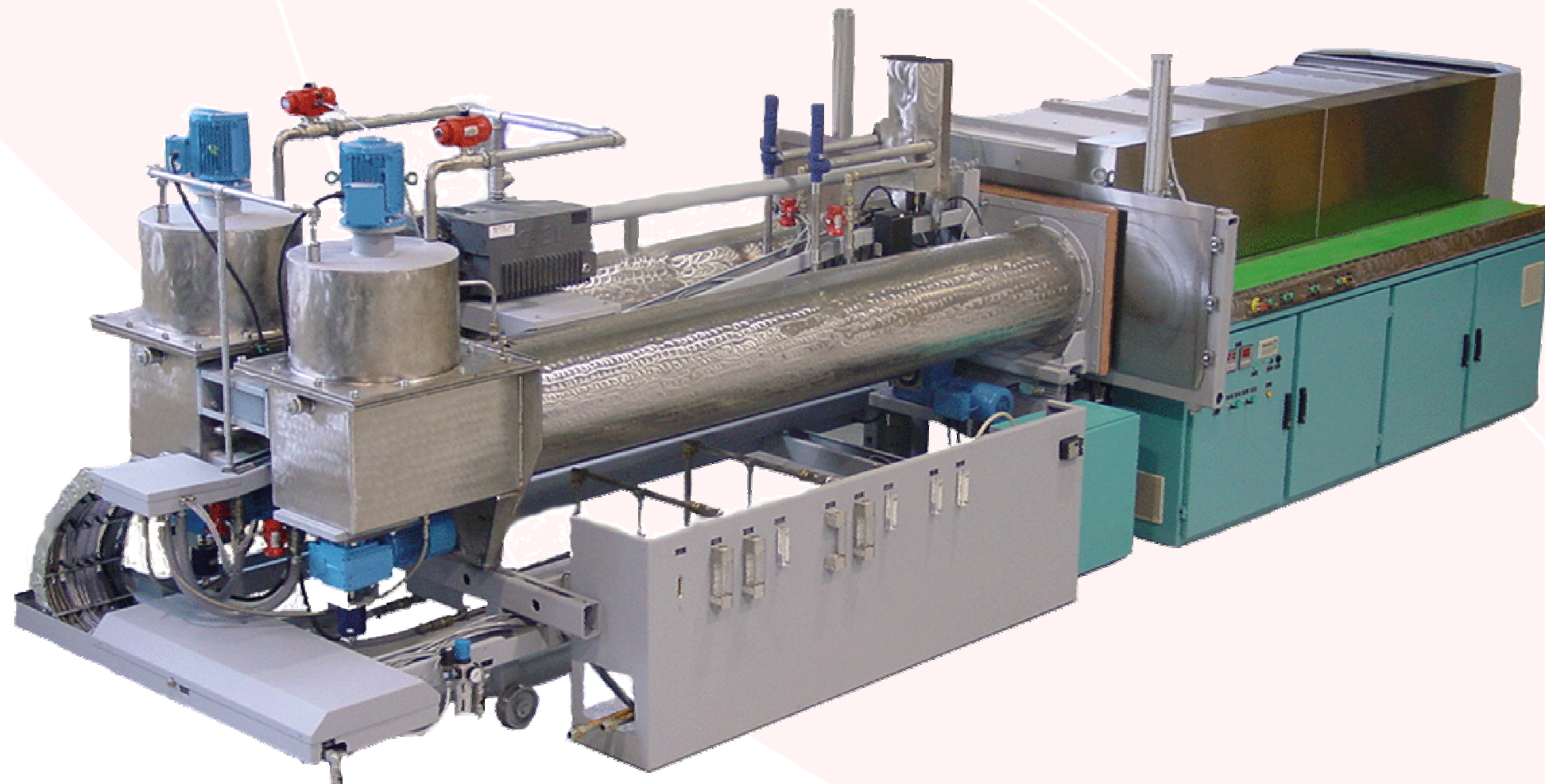
- Perfectly proper surface of the pieces, without oxidation and without coloration.
- No decarburization of the pieces.
- Treatment under gas-tight conditions. The pieces do not have to pass through flames.
- Forced gas convection in the furnace and in the cooling system.
- Homogeneous temperature (5°C) in the entire load. Programmable holding time.
- Homogeneous cooling of the entire load. Programmable cycles.

ECONOMIC BENEFIT

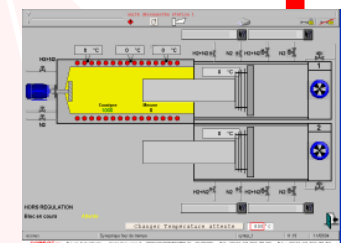
- Easy handling.
- Presence of the operator not necessary during treatment cycle.
- Low space requirements on the floor.
- Doors of the furnace not permanently open.
- Gas consumption reduced by 10 - 50 % (nitrogen, dissociated ammonia or hydrogen).
- Vacuum pump to economize on the purging volumes in the cooling systems.
- Excellent energy balance.
- Even temperature along the whole muffle length, long lifetime.
- No mechanical shocks on the pieces.

ADVANTAGES

- Reproducibility of the results.
- Conditioning of the pieces in bulk or one by one. Different batches of pieces can be treated in the same load.
- Easy automation of basket loading and unloading.
- Loading and unloading at the same place.
- Complete follow-up of batches and loads, full traceability with archiving and cycle reports.
- Place of the set-up of the installation (draught, doors etc.) is of no importance.



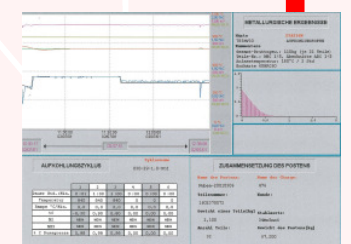
Programming



Monitoring



Managing



Recording

PROTECTIVE GAS

- Nitrogen
- Dissociated ammonia
- Hydrogen

Several models between 15 and 400 kg
Basket width: 100 - 500 mm
Basket length: 1000 - 5000 mm
Load height: 100 - 300 mm
Maximum temperature: 1150°C

CODEPE SA
INDUSTRIAL FURNACES SWITZERLAND