

CODEPE SA offers an exceptionally wide range of complete heat treatment equipment.

Established in the village of Alle, Switzerland, CODERE SA has more than 30 years of experience in the construction of industrial furnaces for the process heat treatment of ferrous and non-ferrous metals.

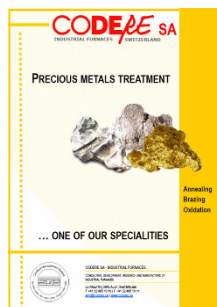
Our position as a leading market supplier is the result of constant efforts in development of processing techniques, research and equipment concepts.

The main product range consists of batch furnace lines in modular construction, pusher-type furnaces, mesh belt-conveyor furnaces, pot furnaces, precious metals treatment furnaces and auxiliary equipment.

CODERE SA works in close collaboration with **ECONOX SA** regarding the installation of supervising system (on new and existing heat treatment installation) as well as measuring and control systems (oxygen probe and controller).

CODERE SA and ECONOX SA patented many new systems and obtained certification to ISO 9001 / ISO 14001 / OHSAS 18001 quality assurance standards.

Other documents available...



Precious metals treatment



Batch-type furnace line
ECOPROCESS
System 251



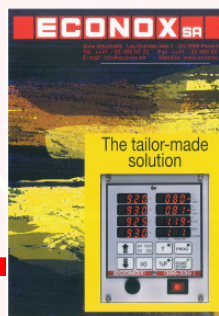
Batch-type furnace line
System 250



Continuous furnaces
System 350



Pusher-type furnace
System 345



Measuring and control
Systems
ECONOX

CODEPE SA

INDUSTRIAL FURNACES SWITZERLAND

GENERAL LEAFLET



A RANGE OF PRODUCTS THAT MEET YOUR NEEDS...

CODEPE SA

INDUSTRIAL FURNACES SWITZERLAND

CONSULTING, DEVELOPMENT, RESEARCH AND MANUFACTURE OF INDUSTRIAL FURNACES

LA FENATTE | CH - 2942 ALLE | SWITZERLAND

T +41 32 465 10 10 | F +41 32 465 10 11

INFO@CODERE.CH | WWW.CODERE.CH

AGENT'S STAMP



Our range of products

SERIE 100

VERTICAL BATCH FURNACES

Hardening and water quenching of light alloy steels
Ageing, putting into solution of non-ferrous alloys

Maximum Temperature
650°C
Cooling
water quench
Load
up to 2500 kg
Load dimension
on inquiry

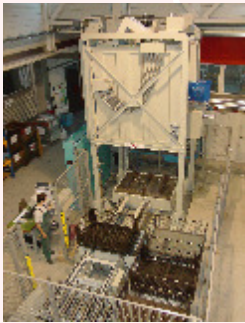


System 120

HORIZONTAL FURNACES

Preheating of tools
Ageing, putting into solution of non-ferrous alloys

Maximum Temperature
650°C
Load
up to 5000 kg
Load dimension
on inquiry

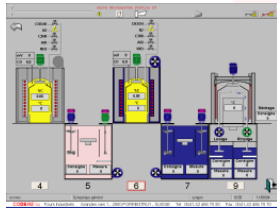


System 140

OTHER SERVICES

PROCESS CONTROL AND SUPERVISION

Management of production lines
Updating furnace process control
Plant supervision



MAINTENANCE

Repairs and preventive maintenance
Maintenance contract
Spare parts
Modernization of heat treatment lines



ADVICES

Expertises
Training
Metallurgical advices
Heat treatment trials



SERIE 200

BATCH-TYPE FURNACE LINE IN MODULAR CONSTRUCTION

Hardening
Carburizing
Carbonitriding
Nitriding
Nitrocarburizing
Oxynitriding
Annealing
Tempering

Maximum Temperature
1150°C
Cooling
oil, salt, water, gas
Load
30 to 1500 kg
Load dimension
diameter 300 to 1100 mm
height 350 to 1500 mm



System 250

BATCH-TYPE FURNACE LINE IN MODULAR CONSTRUCTION - ECOPROCESS

Hardening
Carburizing
Carbonitriding
Nitriding
Nitrocarburizing
Oxynitriding
Annealing
Tempering

Maximum Temperature
1150°C
Cooling
oil, salt, water, gas
Load
30 to 500 kg
Load dimension
diameter 300 to 710 mm
height 400 to 1000 mm



System 251

HARDENING AUTOMATE

Hardening under protective atmosphere of alloy steels
Rapid cooling under nitrogen
Primary vacuum purge

Maximum Temperature
1150°C
Cooling
gas
Load
50 to 150 kg
Load dimension
diameter 420 mm
height 400 to 600 mm



System 280

POT FURNACES

Austenitizing
Carburizing
Carbonitriding
Annealing
Tempering
Brazing
Nitriding

Maximum Temperature
1150°C
Load
200 to 5000 kg
Load dimension
diameter 400 to 2500 mm
height 400 to 4000 mm



System 230

SERIE 300

CONTINUOUS FURNACES UNDER PROTECTIVE ATMOSPHERE

Hardening
Carburizing
Carbonitriding

Maximum Temperature
950°C
Cooling
oil, water, salt
Production
50 to 500 kg/h
Dimension
useful width 200 to 650 mm
heating length 2000 to 5000 mm



System 350

PUSHER-TYPE FURNACES

Annealing
Brazing
Hardening
Precipitation hardening
Sintering
Oxidation
Reduction

Maximum Temperature
1150°C
Cooling
gas
Load
20 to 220 kg
Load dimension
width 200 to 500 mm
height 100 to 300 mm
length 1000 to 5000 mm



System 345

PUSHER-TYPE FURNACES

Annealing followed by water cooling of precious metals under protective atmosphere

Maximum Temperature
1150°C
Cooling
water
Load
30 to 200 kg
Load dimension
width 100 to 800 mm
height 100 to 250 mm
length 1000 to 3000 mm



System 340